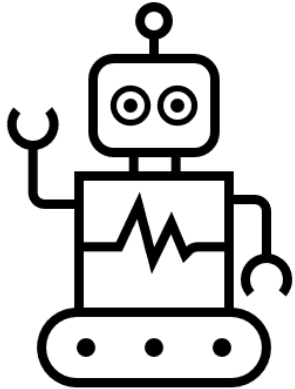


Environmental Stewardship Intergenerational Sunday Stations



Sustainability Snacks: It can be hard to understand the impact your food choices have on the environment, especially with tricky marketing practices. At this station, we will have some good options for sustainable foods and some information on food choices that would be better perceived as luxury treats, instead of everyday foods.

Bugs & Butterflies Matching Game: This matching game is geared for ages 3+, but people of all ages will enjoy the delightful artwork as you race to create matches of our favorite pollinators!

Recycle Robots: At this craft station, use the “RE-USE” part of “Reduce, Re-use, and Recycle” to create a Recycle Robot!

Automation in Recycling: Learn about how recycled materials are sorted in this mesmerizing short video presented on loop on the TV in the lounge.

A small play area will be available for the littlest ones. Kid-friendly snacks will be provided.



Upcoming Christian Education Opportunities

	Youth & Adults	Kids
November 6	Celebration of Earth Stewardship Intergenerational Sunday	
November 13	<p><i>What does it mean to be an LGBTQ ally individually?</i> Discussion led by Kim Welter.</p> <p>Come learn about what it means to be each other's allies, particularly in an LGBTQ context. We will talk about basic legal concepts, policy impacts, and explore what these mean in our collective lives.</p>	<p><i>Follow Me: Live in Community Weeks 3 & 4</i></p>
November 20	<p><i>What are LGBTQ people looking for from a church (What does it mean to be an LGBTQ ally church)?</i> Discussion led by Kim Welter.</p> <p>Our mission study recently revealed that LGBTQ people in Grandview hold a hostile opinion of the "church". Come explore what it might take to overcome that feeling and where it comes from in the first place.</p>	